

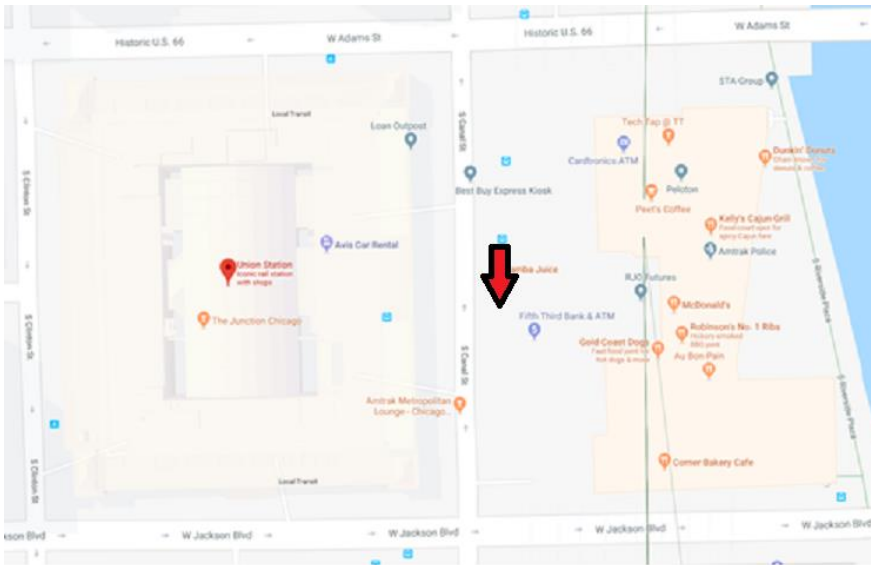
## DRIVER INFORMATION PACKET

### Station Information

#### Chicago Union Station – Station Code: CHI

225 S Canal St, Chicago, IL

312-655-2101 or 312-655-2199



Board on Canal St, north of Jackson Blvd.

#### Summit, IL – Station Code: SMT

Archer Ave and Center Ave, Chicago, IL

*unstaffed – must call CNOC Customer Service prior to departing*

*Driver's note: There is only one access point to/from the Summit parking lot (Center Ave).*



Amtrak shelter by the location pin on map.

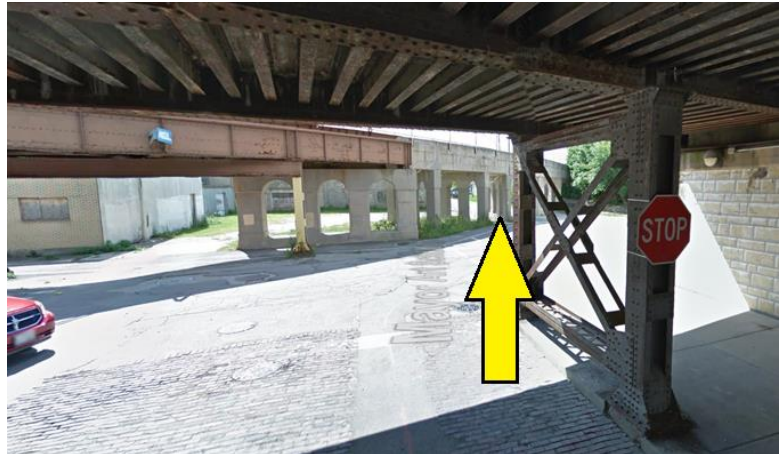
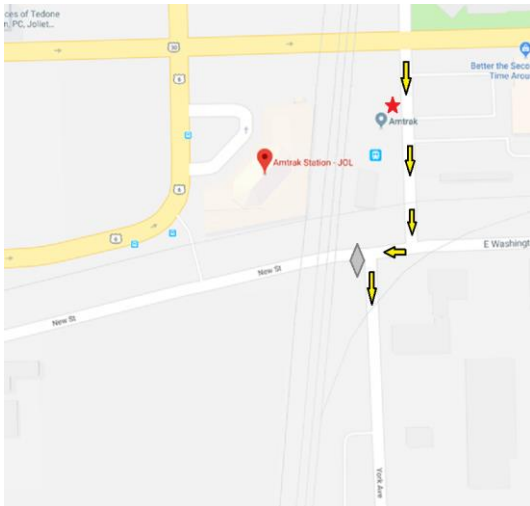
## Joliet, IL – Station Code: JOL

90 E Jefferson St., Joliet, IL

815-727-1209

Agent on duty 0715hrs – 1445hrs

*Driver's note: The Google Maps pin is located on the OLD Union Station. Amtrak Joliet is at the SW corner of Jefferson and Mayor Art Schultz Dr. All the rail viaducts south of the station have a maximum height clearance of 12ft. The City of Joliet asks drivers to continue south on Mayor Art Schultz Dr toward New St/Washington and take the "S" curve to go south on York Ave.*



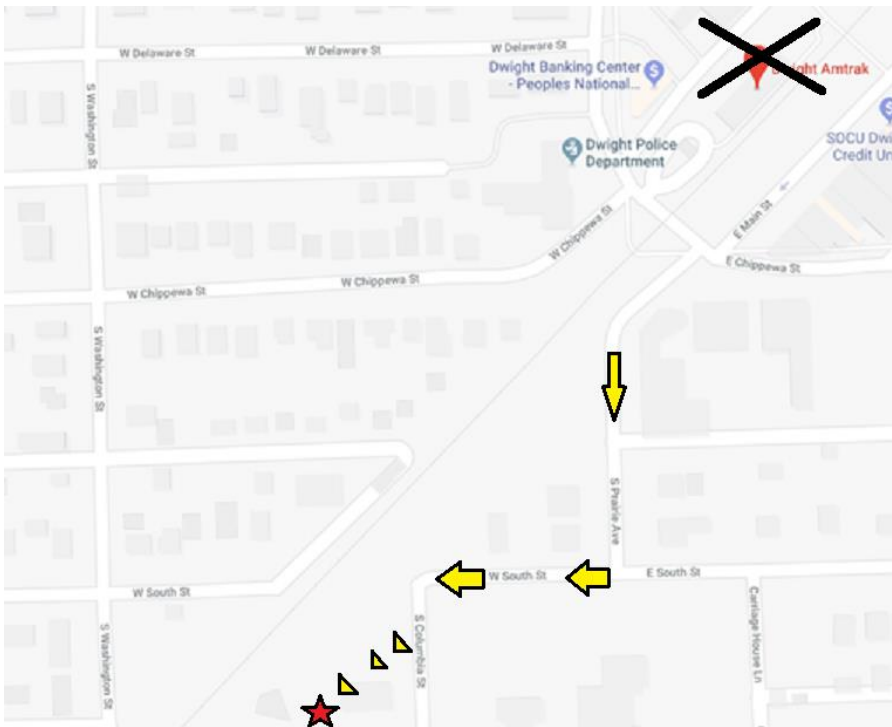
*Ignore red pin, head to blue pin/red star*

*View south from Mayor Art Shultz Dr towards New St.*

## Dwight, IL – Station Code: DWT

401 S Columbia St, Dwight, IL

*unstaffed – must call CNO Customer Service prior to departing*

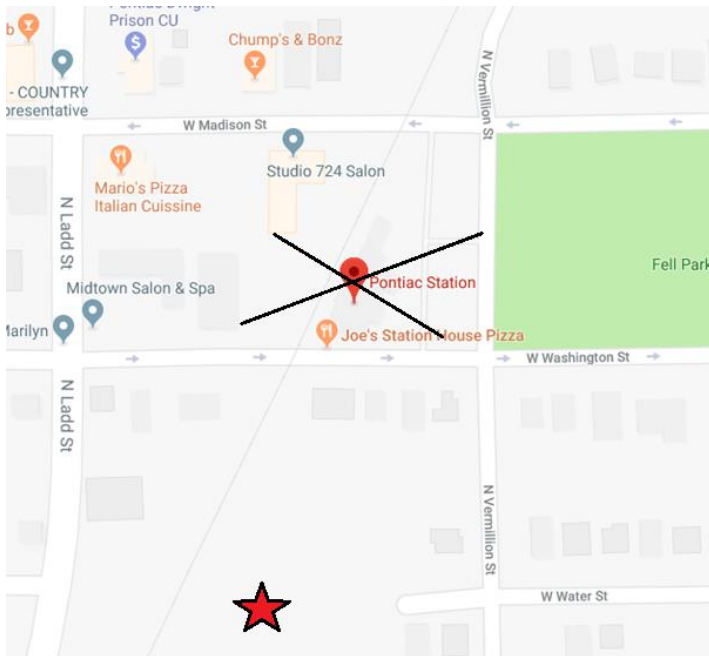


**Pontiac, IL – Station Code: PON**

711 W Water St, Pontiac, IL

*unstaffed – must call CNOC Customer Service prior to departing*

*Driver's note: Station has single access point on Water St. (street leads into station parking lot)*



**Bloomington-Normal, IL – Station Code: BNL**

11 Uptown Circle, Normal, IL

309-454-3912

Agent on duty 0600hrs – 2115hrs

*Driver's note: Buses must enter through bus bay entrance on Broadway off of Beaufort.*

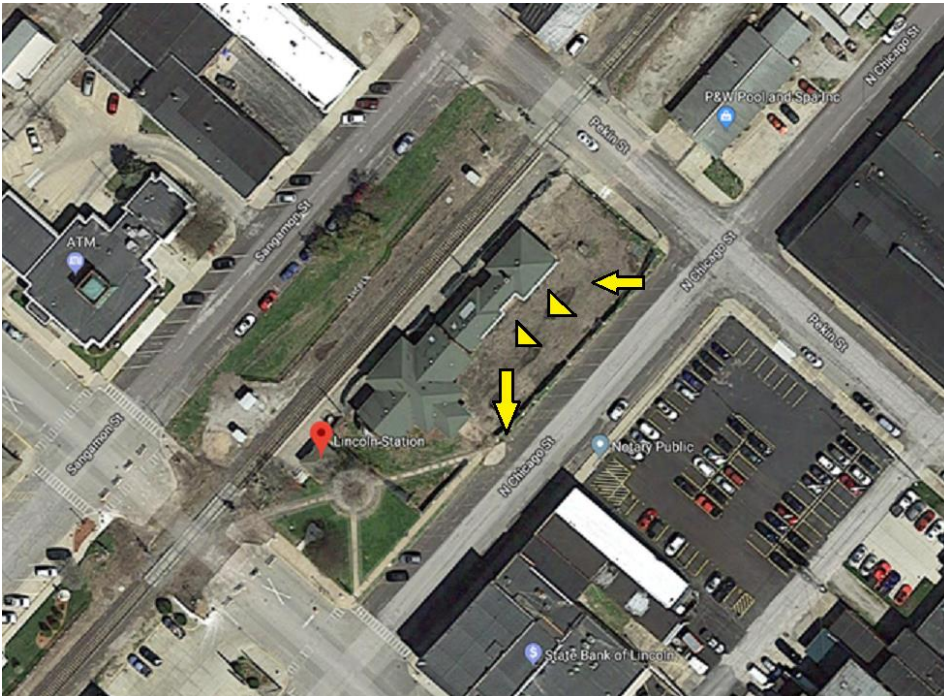


**Lincoln, IL – Station Code: LCN**

103 N Chicago St, Lincoln, IL

*unstaffed – must call CNOC Customer Service prior to departing*

*Driver's note: The yellow arrows in the image below is the approximate circle drive leading up to the station's waiting area. If possible, please discharge and pick up from the circle drive.*



**Springfield, IL – Station Code: SPI**

100 N 3<sup>rd</sup> St, Springfield, IL

217-753-1130

Agent on duty 0600hrs – 2230hrs

*Driver's note: Bus must turn into parking lot off Jefferson St and spot in front of station building. Do not discharge west of the tracks. This is noted in the image below.*

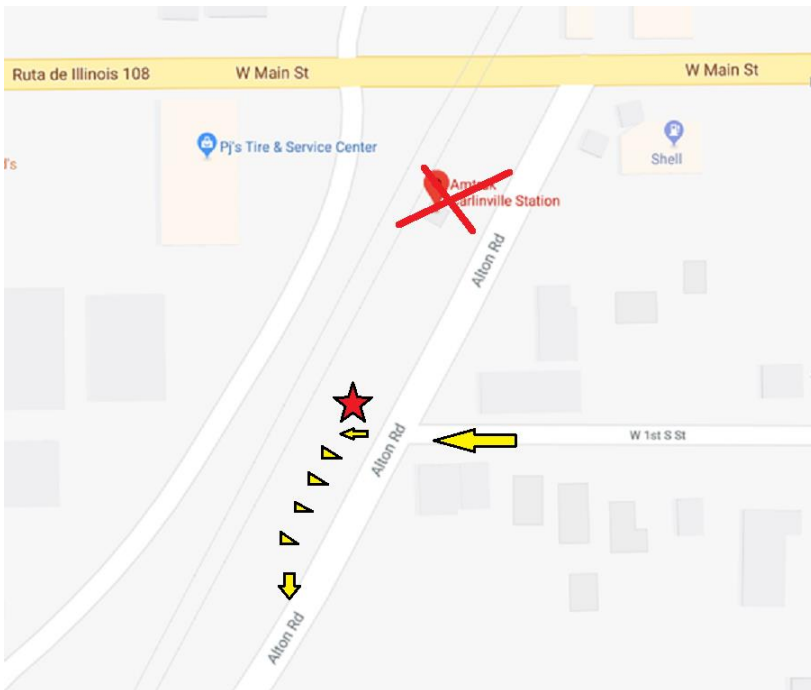


**Carlinville, IL – Station Code: CRV**

128 Alton Rd, Carlinville, IL

*unstaffed – must call CNOC Customer Service prior to departing*

*Driver's note: There is a parking lot to the south of the train station. Please pick up and discharge from the lot.*



**Alton, IL – Station Code: ALN**

1 Golf Rd, Alton, IL

618-462-1879

Agent on duty 0630hrs – 1630hrs

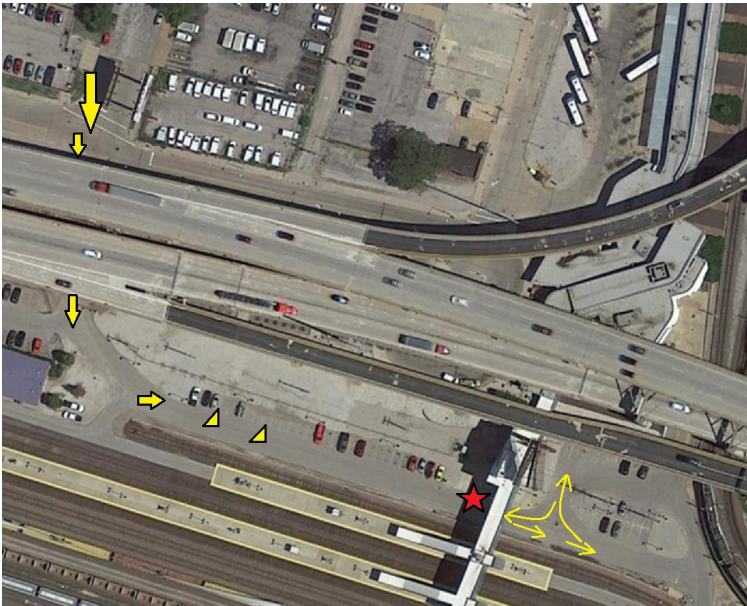
*Driver's note: Two options exist to either use the bus bay or the main circle drop off.*



**St. Louis, MO – Station Code: STL**430 S 15<sup>th</sup> St, St. Louis, MO      314-331-3310

Agent on Duty 24hrs daily

*Driver's note: Drivers must utilize Amtrak parking lot off 16<sup>th</sup> and Poplar. Buses must pull forward past the skybridge and then perform a 3 point turn at the T-intersection just beyond the skybridge.*

**Station Information:**

Chicago Union Station (CHI)	225 S Canal St, Chicago, IL	312-655-2101
Summit (SMT)	Archer Ave & S. Center Ave	<i>unstaffed</i>
Joliet (JOL)	90 E. Jefferson St, Joliet, IL	815-727-1209
Dwight (DWT)	401 S Columbia St, Dwight, IL	<i>unstaffed</i>
Pontiac (PON)	711 W Water St, Pontiac, IL	<i>unstaffed</i>
Bloomington-Normal (BNL)	11 Uptown Circle, Normal, IL	309-454-3912
Lincoln, IL (LCN)	103 N Chicago St, Lincoln, IL	<i>unstaffed</i>
Springfield, IL (SPI)	100 N Third St, Springfield, IL	217-753-1130
Carlinville, IL (CRV)	128 Alton Rd, Carlinville, IL	<i>unstaffed</i>
Alton, IL (ALN)	1 Golf Rd, Alton, IL	618-462-1879
St. Louis, MO (STL)	430 S 15 <sup>th</sup> St, St. Louis, MO	314-331-3310

CNOC Customer Service      302-683-2299